

steven harvey fine art projects presents



Todd Bienvenu Clintel Steed

June 17- July 31, 2015
opening: Wed, June 17, 6-8pm
summer hrs: Wed- Sat, 12- 6pm and by appt

SHFAP@PROJECTOR

237 eldridge street
new york ny 10002

917-861-7312 info@shfap.com www.shfap.com

shfap

Press Release:

Todd Bienvenu and Clintel Steed

June 17 - July 31, 2015

Artist Reception: Wednesday June 17, 6-8pm

SHFAP@PROJECTOR

237 Eldridge Street

gallery hrs: 12-6, Wed-Sat and by appt

917-861-7312 info@shfap.com



Steven Harvey Fine Art Projects is proud to present a two-person exhibition of recent paintings by Todd Bienvenu and Clintel Steed. Bienvenu and Steed became close friends while attending the New York Studio School together. Stylistically they are both quintessential painterly painters, working with a rough broad facture that is very free.

Bienvenu was born in Little Rock, Arkansas, and he graduated from the New York Studio School in 2007. His paintings ironically expose the dark underbelly of American pop culture: sex, butts, drinking, babes, tattooed rockers, professional wrestling, motorcycles and apocalyptic zombies. Bienvenu's work is driven by an intense investigation of the way painting works and a deep engagement with the art of his contemporaries as well as art history. Bienvenu is currently represented by Life on Mars Gallery in Bushwick. His work has also been included in numerous exhibitions in galleries across the country such as Centotto, Valentine, Novella, Outlet, Tiger Strikes Asteroid, Sideshow and Ethan Pettit. Bienvenu has taught painting and drawing at Louisiana State University.

Clintel Steed was raised in a religious Pentecostal community in Salt Lake City, Utah. He received his MFA from Indiana University in 2001 and finished at the New York Studio School in 2007. Steed's bright, thickly layered paintings and deft, expressive handling of the figure call to mind Auerbach, Soutine and Picasso. Characterized by exuberant collage-like compositions, his broken-up space and fractured forms result in unusual and complex rhythms, alluding to the tumultuous complexity that prevails over our current reality.

Steed's political subject matter is an important component of his work. His images are drawn from the recent Baltimore uprisings, the war in Afghanistan and a host of other charged political events. Steed's paintings explore and expose the oppressive power structures that constrict his America, considering socioeconomic immobility, racial prejudice and the experience of being black in this country. As he puts it, reflecting on his childhood and upbringing, "the battle between good and evil, heaven and hell was preached all the time. This struggle is still within me, the lust for money and the battle for power. Painting these ideas and icons, in a way, helps me meditate upon the emotions they conjure in a more contemplative way."

In 2015 Steed received the John Koch Award at the American Academy of Arts and Letters. His work has been included in numerous exhibitions at Knapp Gallery, PA, Borghi Fine Art, Phillips Church, Harlem and the National Academy. Please contact the gallery for further information or photographs.

steven harvey fine art projects

208 forsyth street new york ny 10002

p 917 861 7312 e info@shfap.com w www.shfap.com

shfap



Todd Bienvenu
Boys Will Be Boys, 2014
Oil On Canvas
76 x 67 in

shfap



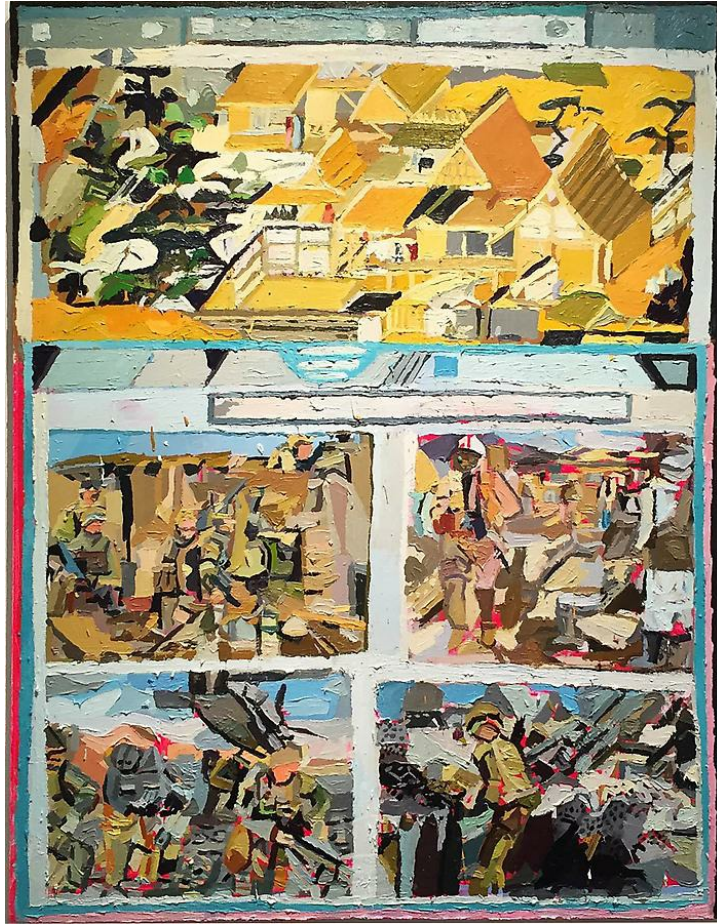
Clintel Steed
Untitled Metaphor, 2015
Oil On Panel
84 x 96 in

shfap



Todd Bienvenu
The Deep End, 2015
Oil On Canvas
54 x 46 1/2 in

shfap



Clintel Steed
Heaven and Hell, 2015
Oil On Panel
62 x 48 in

shfap



Todd Bienvenu
Ash Wednesday, 2015
Oil On Panel
10 1/2 x 12 in

shfap



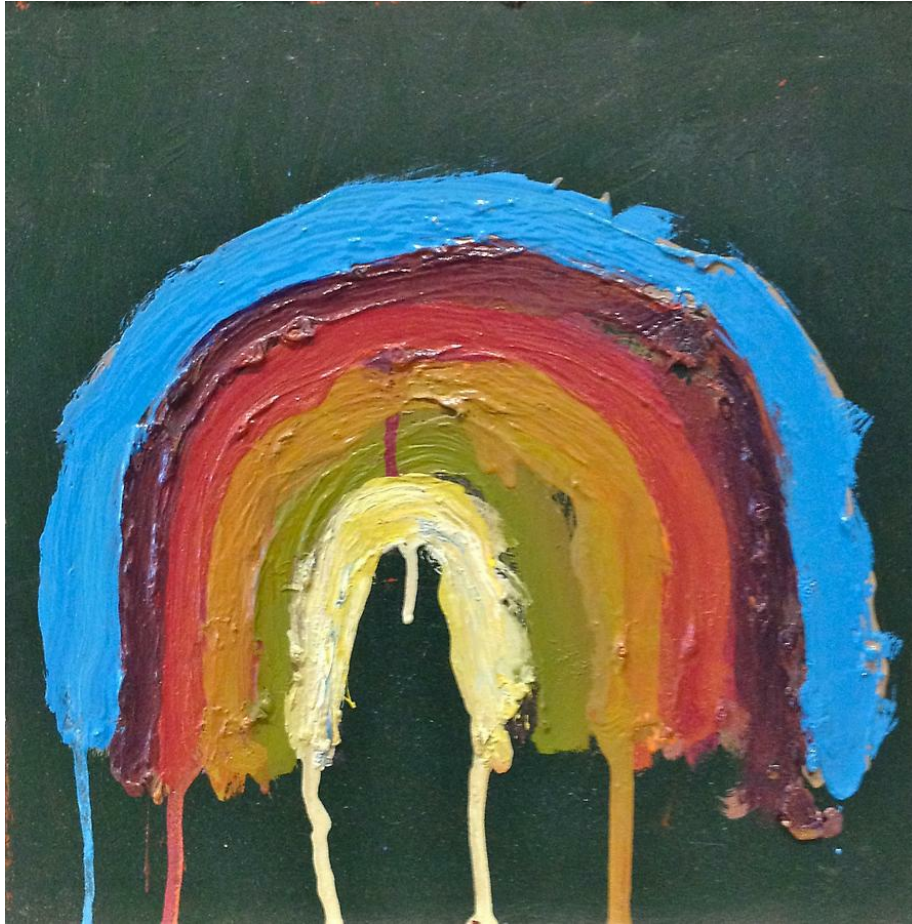
Clintel Steed
Satellite and Glitch Screen, 2015
Oil On Panel
15 x 10 in

shfap



Clintel Steed
Love and Destruction, 2015
Oil On Panel
19 1/4 x 15 in

shfap



Todd Bienvenu
Rainbow, 2015
Oil On Panel
54 x 46 1/2 in

shfap



Todd Bienvenu
On the Road Again, 2015
Oil On Panel
13 x 12 in

shfap



Clintel Steed
Robots and Jesus Christ, 2015
Oil On Panel
24 1/2 x 13 3/4 in

TODD BIENVENU & CLINTEL STEED



Todd Bienvenu
Boys Will Be Boys, 2014
 Oil On Canvas
 76 x 67 in

\$11,000



Clintel Steed
Untitled Metaphor, 2015
 Oil On Panel
 84 x 96 in

\$12,000



Todd Bienvenu
The Deep End, 2015
 Oil On Canvas
 54 x 46 1/2 in

\$6,500



Clintel Steed
Heaven and Hell, 2015
 Oil On Panel
 62 x 48 in

\$7,000



Todd Bienvenu
Ash Wednesday, 2015
 Oil On Panel
 10 1/2 x 12 in

\$1,400



Clintel Steed
Satellite and Glitch Screen, 2015
 Oil On Panel
 15 x 10 in

\$1,000

shfap



Clintel Steed
Love and Destruction, 2015
Oil On Panel
19 1/4 x 15 in

\$1,200



Todd Bienvenu
Rainbow, 2015
Oil On Panel
54 x 46 1/2 in

\$1,400



Todd Bienvenu
On the Road Again, 2015
Oil On Panel
13 x 12 in

\$1,400



Clintel Steed
Robots and Jesus Christ, 2015
Oil On Panel
24 1/2 x 13 3/4 in

\$2,500