

shfap



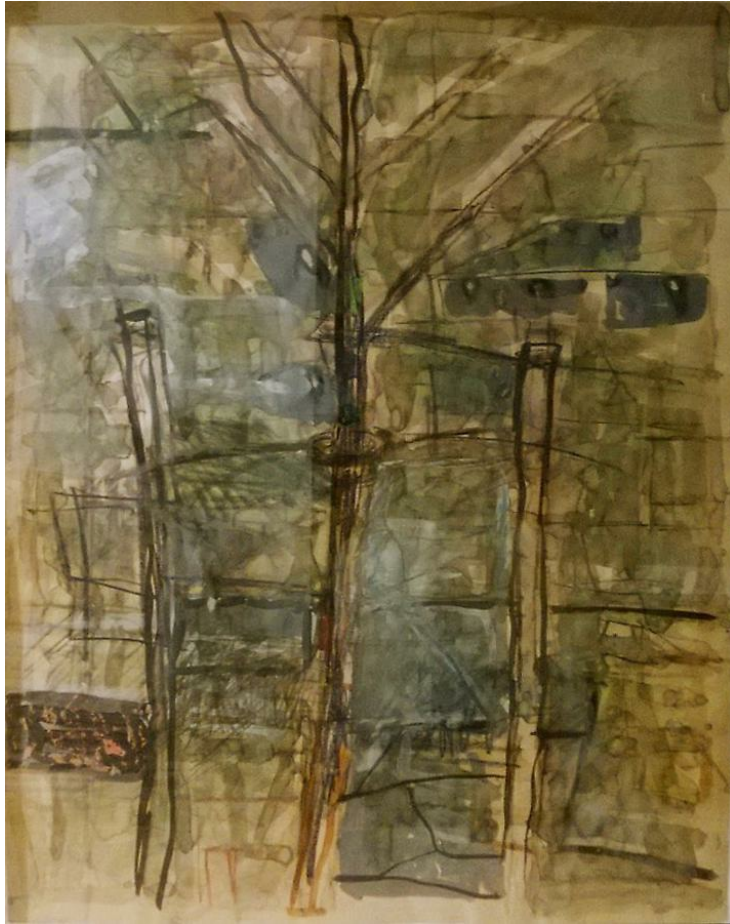
Gandy Brodie
Still Life of Flowers in Vase, c. 1968
Mixed Media On Paper
22 x 17 in

shfap



Gandy Brodie
Untitled (red tenement), 1973
oil pastel on paper
23 1/2 x 18 3/4 in

shfap



Gandy Brodie
Tree in the City, c. 1965
watercolor, ink, pencil, crayon and gouache on paper
25 1/2 x 19 5/8 in

shfap



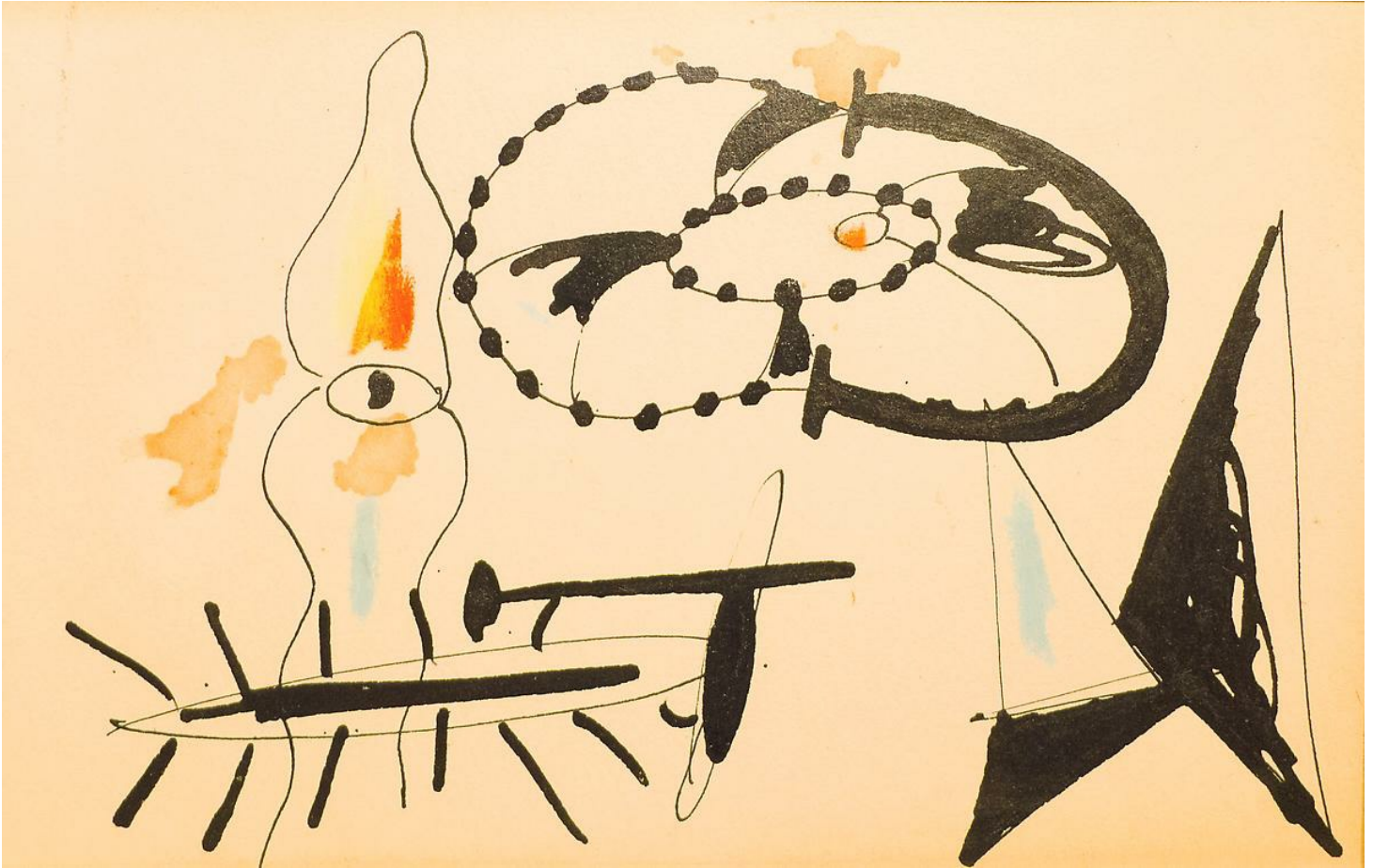
Sandro Chia
Untitled, 1984
Oil and pastel on paper
64 x 42

shfap



Angela Dufresne
The Real Allegory of My Artistic Life for the Past 17 Years, 2014
charcoal on paper
22 x 30 in

shfap



Arshile Gorky
Untitled, 1941
Ink and other media on paper
4 3/8 x 6 3/4 in

shfap



Alison Hall
Todi (#8), 2015
gouache and graphite on paper
9 1/2 x 7 1/2 in

shfap



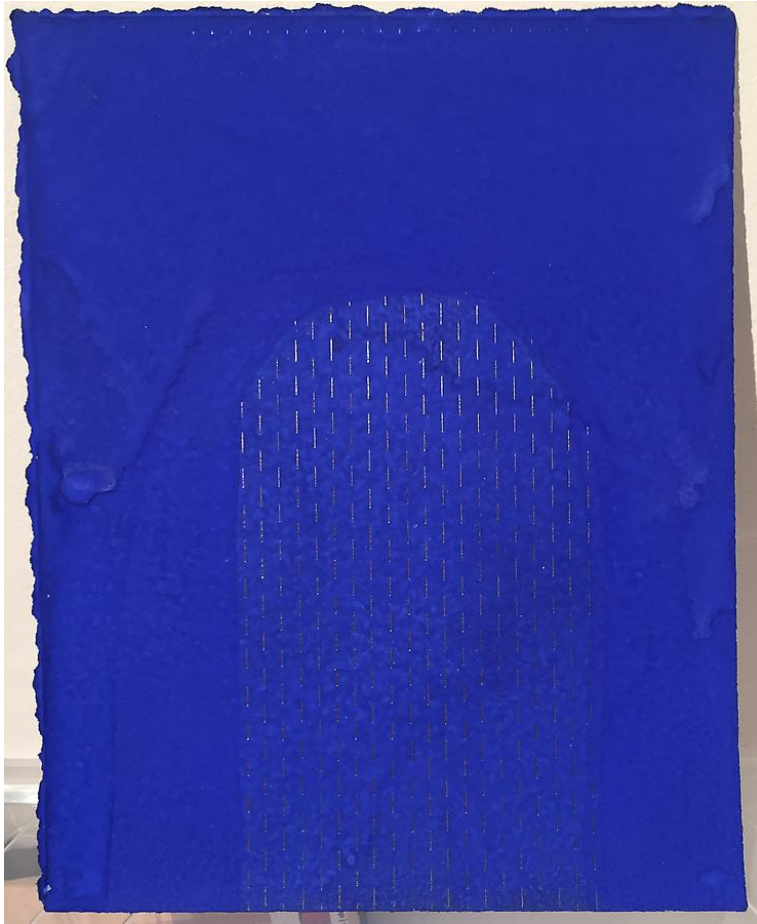
Alison Hall
Todi (#9), 2015
gouache and graphite on paper
9 1/2 x 7 1/2 in

shfap



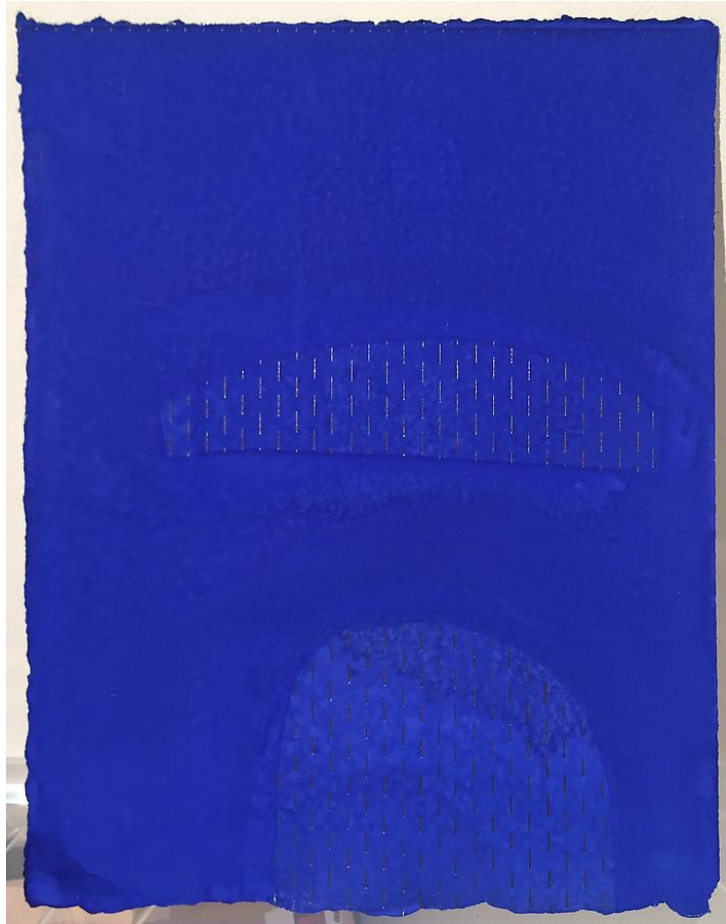
Alison Hall
Todi (#11), 2015
gouache and graphite on paper
9 1/2 x 7 1/2 in

shfap



Alison Hall
Todi (#12) (this is duplicate record), 2015
gouache and graphite on paper
9 1/2 x 7 1/2 in

shfap



Alison Hall
Todi (#10), 2015
gouache and graphite on paper
9 1/2 x 7 1/2 in

shfap



Robert Harms
Hotel Flowers, Nevis, 2011
watercolor on paper
7 x 5 in

shfap



Robert Harms
Bougainvillea, Nevis, 2013
watercolor on paper
7 x 5 in

shfap



Robert Harms
Hong Kong Orchid, Nevis, 2013
watercolor on paper
7 x 5 in

shfap



Robert Harms
Orchid, Nevis, 2014
7 x 5 in

shfap



Robert Harms
Bougainvillea, Nevis, 2014
watercolor on paper
12 x 9 in

shfap



June Leaf
Romance Center, 1979
ink and acrylic on paper
25 3/4 x 30 3/4 in framed

shfap



June Leaf
Head of Robert Younger, 1990s
acrylic over polaroid
11 x 8 1/2 in

shfap



Zoe Leonard
Houses
16 1/2 x 23 1/2 in

shfap



Gladys Nilsson
Mopping The Brow, 1977
watercolor on paper
30 x 22 1/4 in

shfap



Stuart Shils
nearer the kingdom (#16), 2015
monotype, etching ink on paper
14 1/2 x 15 in

shfap



Stuart Shils
'may i touch said he, how much said she' (#4), 2015
montype, etching ink on paper
15 x 15 in

shfap



Stuart Shils
the beginnings of orange (#8), 2015
monotype, etching ink, graphite on paper
15 x 15 in

shfap



Stuart Shils
Large Questions about Yesterday (#1), 2015
monotype, etching ink on paper
15 x 15 in

shfap



Stuart Shils
her quiet thoughts about turkish poetry (#11), 2015
monotype, etching ink, graphite on paper
15 x 15 in

shfap



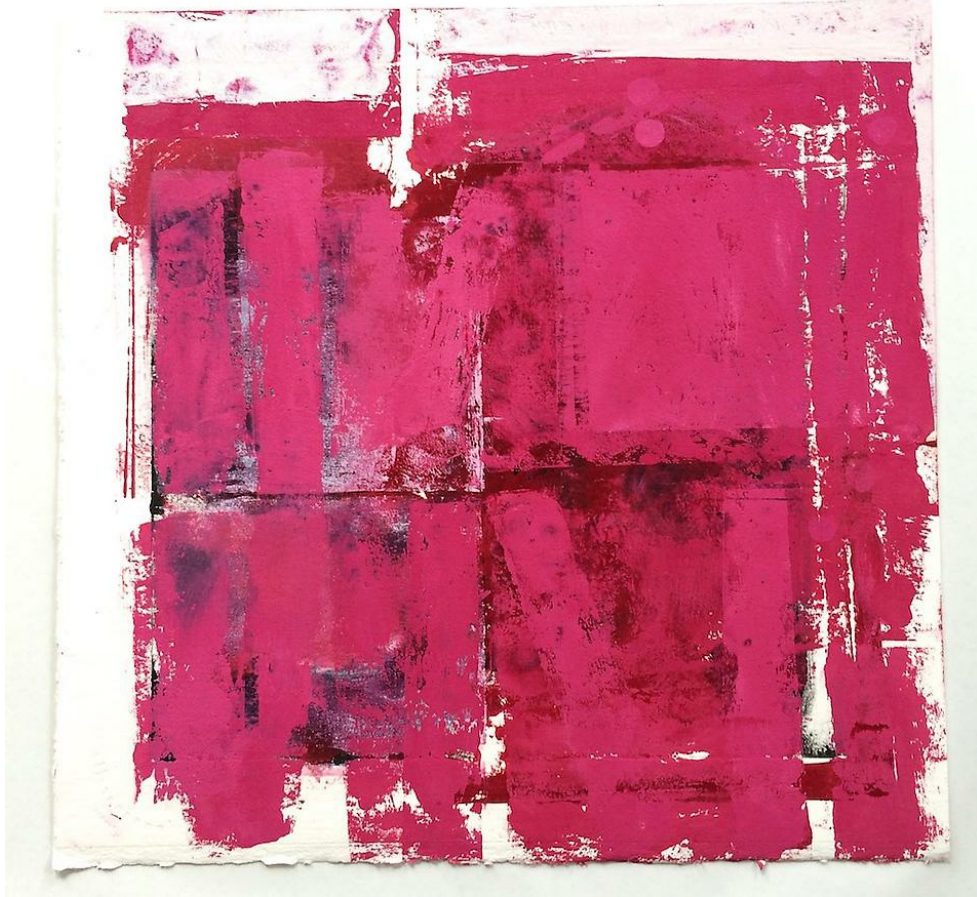
Stuart Shils
many complicated intersections within the city of desire (#9), 2015
monotype, etching ink on paper
14 1/2 x 15 in

shfap



Stuart Shils
'electric music for the mind and body' (#13), 2015
monotype, etching ink, graphite on paper
14 1/2 x 15 in

shfap



Stuart Shils
the residue of my father's flounders in sunlight (#2), 2015
monotype, etching ink on paper
14 1/2 x 15 in

shfap



Bob Thompson
Portrait of Nina Simone, Provincetown, 1965
Ink On Paper
23 3/4 x 18 in

shfap



Bob Thompson
Study for Expulsion and Nativity, 1963
pastel on paper
9 x 12 in

shfap



Bob Thompson
Red, 1958
Pastel on paper
13 7/8 x 10 3/4 in

shfap



Bob Thompson
Untitled (Nudes), 1959
Charcoal on paper
11 7/8 x 17 3/4 in

shfap



Bob Thompson
The Red Balloon, c. 1958
watercolor on paper
13 1/2 x 10 3/4 in