



# Kurt Knobelsdorf

Postcard from Florida

# Kurt Knobelsdorf

## Postcard from Florida

Kurt Knobelsdorf moved from Philadelphia to Miami this year. A friend suggested that a change in climate might brighten his palette. However Knobelsdorf has always found color in the shadows and now he finds darkness in the Florida sun. His light is never strictly naturalistic. When he paints outdoors, he will often record the motif in a digital photo and then continue to work on the painting back in the studio using the photograph now stored in his computer. In a way he is a digital painter. He understands working from the computer as well as anyone painting today. He paints from the computer as if he were painting from life. The painter Francis Bacon suggested that a painter can utilize photography if the source material was transformed. Whether he's painting from religion or porn, horror films or advertising or the the house around the corner, Knobelsdorf transforms his source material into a cavalcade of hallucinatory scenes. He discovers rituals of the bizarre and the marvelous in daily life and transforms his finds into rich painterly realities.

December 7 2010 - January 15 2011



steven harvey  
fine art projects  
24 east 73rd street, #2F  
New York, NY 10021  
ph: 917-861-7312  
email: [info@shfap.com](mailto:info@shfap.com)  
[www.shfap.com](http://www.shfap.com)  
hrs: 11-5:30 Tues - Sat

cover: *Church on Television* 2010 oil on canvas mounted on board 8x10 in (detail)

rear cover: *Atlantic # 5*, 2010, oil on paper mounted on board, 8 x 10 in (detail)



1) *Elavil*, 2010, oil on paper mounted on board, 8x10 in



2) *Atlantic #11*, 2010, oil on paper mounted on board, 8 x10 in



3) *Elephant and Man*, 2010, oil on canvas mounted on board, 8 x 10 in



4) *Forget About Jesus* , 2010, oil on paper mounted on board, 8 x 10 in



5) *Hippo, Men, and Cars*, 2010, oil on paper mounted on board, 8x10



6) *Jaime and Robin*, 2010, oil on paper mounted on board, 8x10 in





7) *Lassie and Collie*, 2010 , oil on paper mounted on board ,11x14 in



8) Pill Commercial, 2010, oil on paper mounted on board, 8x10 in



9) Putt-Putt, 2010, oil on paper mounted on board, 8 x 10 in



10) Swine, Man and Van , 2010 , oil on paper mounted on board, 8x10 in



11) Woman and Woods, 2010, oil on paper mounted on board ,11x14 in



12) Sunshine Bank, 2010, paper mounted on panel, 11 x 14 in



13) Woman Before House (Recurring Dream), 2010, paper mounted on panel, 10 x 12 in



14) Lincoln Mall, 2010, paper mounted on panel, 8 x 10 in





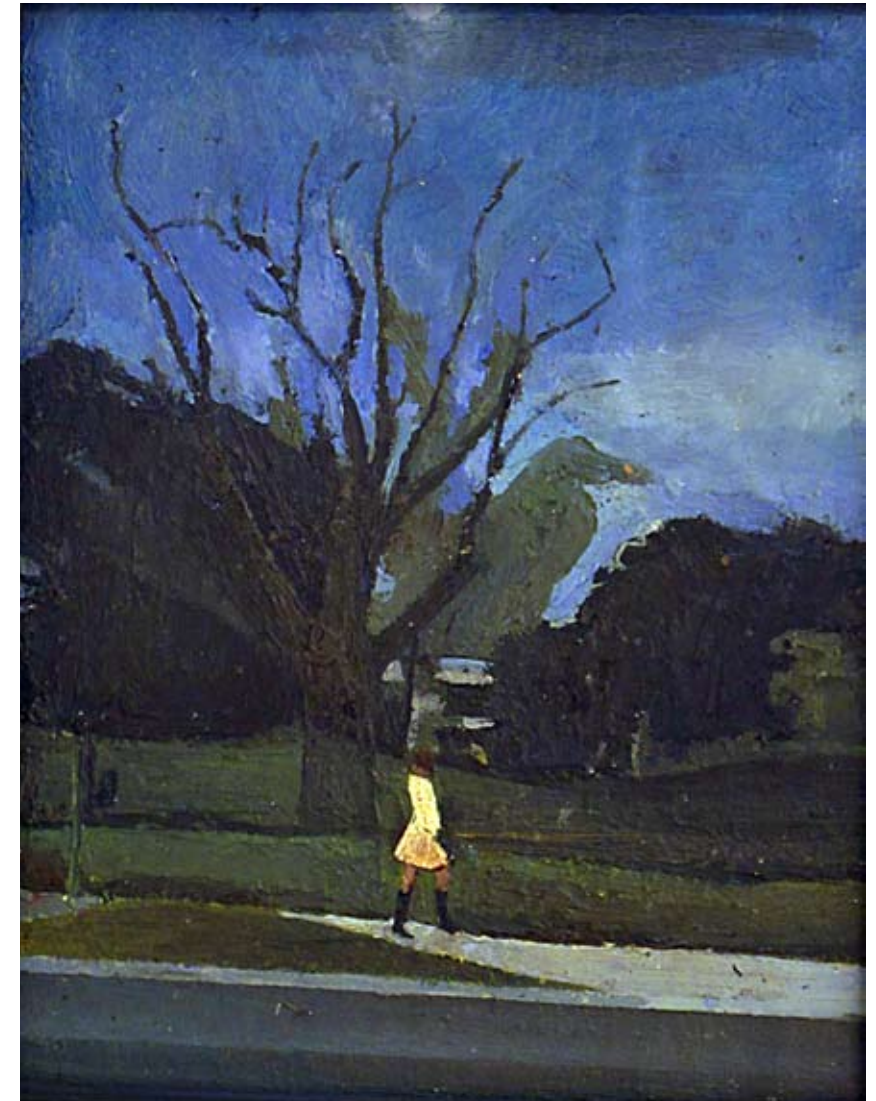
15) Cindy 1, oil on panel, 15 1/2 x 16 in



16) Homestead, 2010, oil on paper mounted on panel, 8 x 10 in



17) Child on Trampoline, 2010, paper mounted on panel, 10 x 10 in



18) A Dead Tree and a Woman, 2010, oil on paper mounted on board, 10 x 8 in



19) CVS 2010, oil on paper mounted on board, 8 x 10 in



20) Palindromes, 2010, oil on paper mounted on board, 8" x 10"



SHFAP