



**A
B
I
G
A
I
L

D
U
D
L
E
Y**

Abigail Dudley, *Studio life*, 2023-24, oil on linen mounted on linen, 40 x 48 in

IN SIGHT

May 29 - July 3, 2024

opening reception Wednesday, May 29, 6-8pm

Steven Harvey 208 Forsyth Street, NYC, 10002

917-861-7312 info@shfap.com www.shfap.com

shfap

Press Release:

In Sight

Abigail Dudley

May 29 - July 3, 2024

Opening on Wednesday 05/29 6 - 8 pm

steven harvey fine art projects

208 forsyth st, 10002

Wednesday - Saturday, 12 - 6 pm

Abigail Dudley (b 1996) depicts aspects of the everyday awash in atmospheric color and suffused light. Her compositions depict a mosaic of interlocking forms where objects and figures shift in and out of soft focus. Dudley blurs images together, skews perspective, and adds amorphous painterly gestures, resulting in work that weaves in between abstraction and representation.

The works in this show introduce elements of the fantastic to Dudley's observed surroundings. They retain her sensitive, personal quality, but with an added touch of the mythic. She writes:

In my paintings, layered constructions of interior spaces and still lives act as portals to build a reality that is malleable. I am interested in having highly rendered imagery and paper-thin memories exist within one image to bring a deeper level of looking.

Just like how certain flowers take on bright colors to mimic a poisonous plant to protect its vulnerability, I am interested in how heightened color can act as a veil to protect and conceal hidden stories in each painting. My paintings take time to fully mature. I aim to reach a balance between a fresh spontaneity to bring them to a conclusion while revealing traces of previous possibilities in the life of each of the paintings. I think about the proximity that comes with the complexion of each painting, how bright colors and sensitively rendered passages create a space that pushes against each other to test their strength and the strength of reality and memories. I'm interested in how the temperament of each painting demands the viewer to engage with the painting at different differences.

Abigail Dudley received her BFA from the Pennsylvania Academy of Fine Arts, and both attended and worked at the Mount Gretna School of Art. While in the undergraduate program at PAFA, Dudley received the Raymond D & Estelle Rubens Travel Scholarship for European travel. Dudley's work has been presented in solo and group exhibitions throughout the Northeast including in New York City, Baltimore, MD, and Philadelphia, PA. SHFAP has shown her work

steven harvey fine art projects

208 forsyth street new york ny 10002

p 917 861 7312 **e** info@shfap.com **w** www.shfap.com

shfap

in a solo show in 2023, *Invention Observed*, as well as in a group show in 2022. She was also featured in a group show at LaiSun Keane, curated by John Yau in 2023. Dudley is a two-time recipient of the Elizabeth Greenshield Grant, once in 2020 and again in 2022, and was the artist in residence at the Lois and Charles X Carlson Landscape Residency in 2021.

steven harvey fine art projects

208 forsyth street new york ny 10002

p 917 861 7312 **e** info@shfap.com **w** www.shfap.com

shfap

ABIGAIL DUDLEY - IN SIGHT



Abigail Dudley
Monday Morning, 2023
oil on linen mounted on aluminum
24h x 28w in

s h f a p



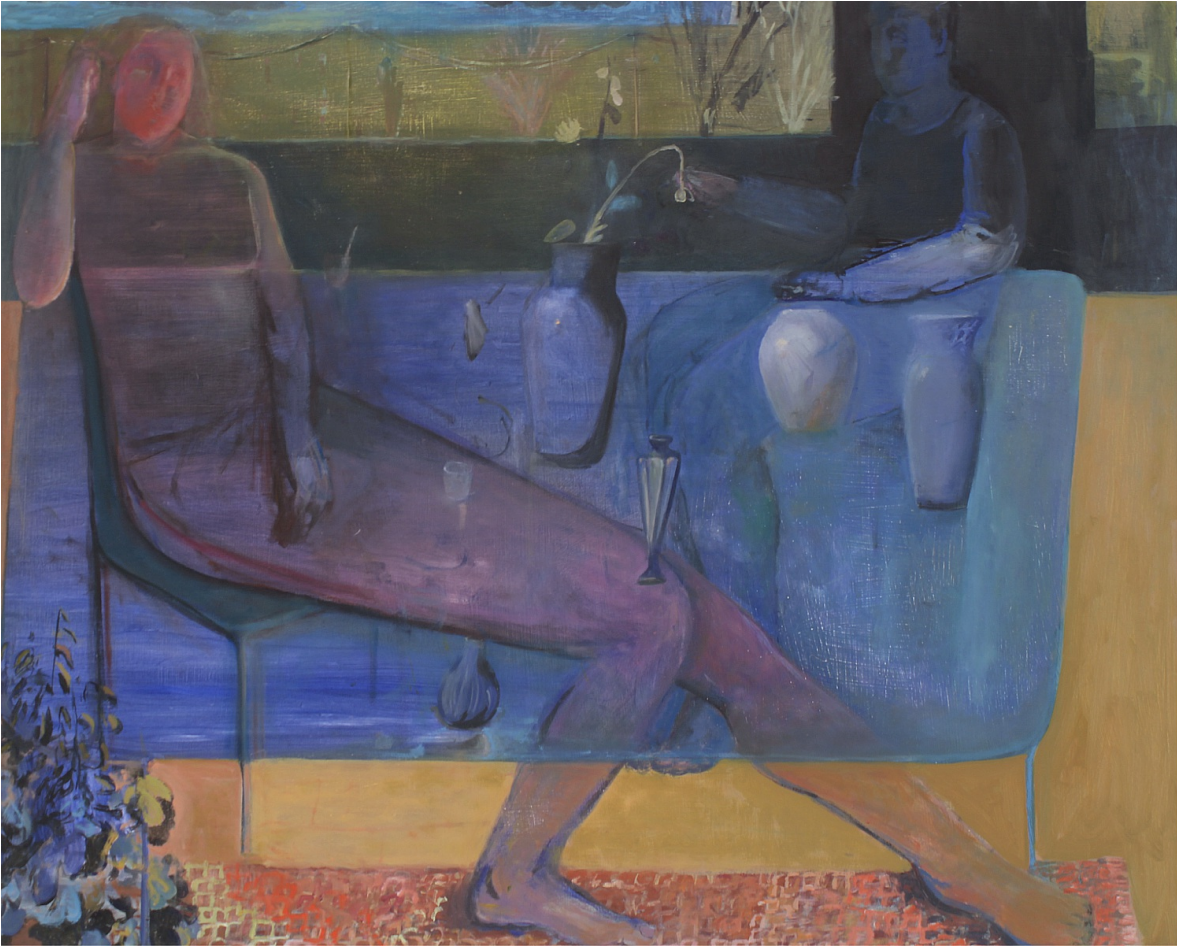
Abigail Dudley
Chance of Rain, 2023-24
oil on linen mounted on aluminum
48h x 40w in

s h f a p



Abigail Dudley
Holly on Orange Chair
oil on linen mounted on aluminum
38h x 25 1/2w in

s h f a p



Abigail Dudley
Heart to Heart, 2024
Oil On Panel
24h x 30w in

s h f a p



Abigail Dudley
Studio Life
oil on linen mounted on aluminum
48h x 40w in

s h f a p



Abigail Dudley
Sugar Bowl
12h x 16w in

s h f a p



Abigail Dudley
Skys, 2024
Oil On Panel
30h x 24w in

shfap



Abigail Dudley
Silma, 2023-24
Oil on linen mounted on panel
18h x 18w in

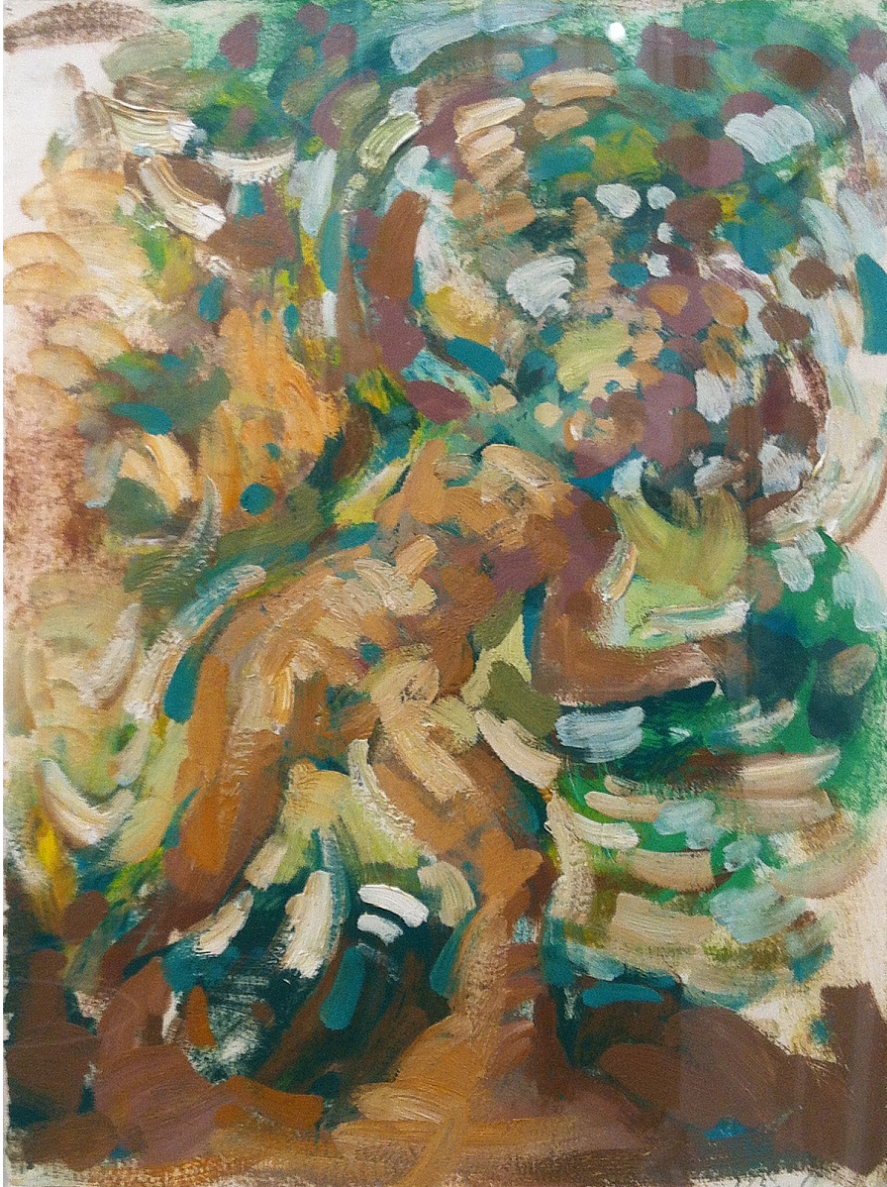
s h f a p



Abigail Dudley
Emmanuel, 2023-24
Oil on linen
32h x 36w in

shfap

REAR GALLERY



Rosemarie Beck
Daphne Turning into a Tree, 1982
Oil On Paper
14 1/2h x 10 3/4w in

s h f a p



June Leaf
Shadow of Hands, 1999-2000
acrylic on muslin on canvas
31h x 51w in

s h f a p



Abigail Dudley
Spring Passage, 2022
Oil on linen mounted on panel
16h x 20w in

s h f a p



E.M. Saniga
Girl in a Slip, undated
Oil On Canvas
10 1/2h x 8 1/2w in

shfap



Elise Siegel
Portrait with Cobalt and White Underglaze
25h x 13w x 8 1/2d in

s h f a p



Anne Harvey
Firewood
acrylic and oil on canvas

s h f a p



Susanna Coffey
Sharon's Potion's Breath, 2011
Oil On Panel
15h x 12w in

s h f a p



Abigail Dudley
Artist at Night, 2023-24
oil on linen mounted to aluminum
44h x 20w in